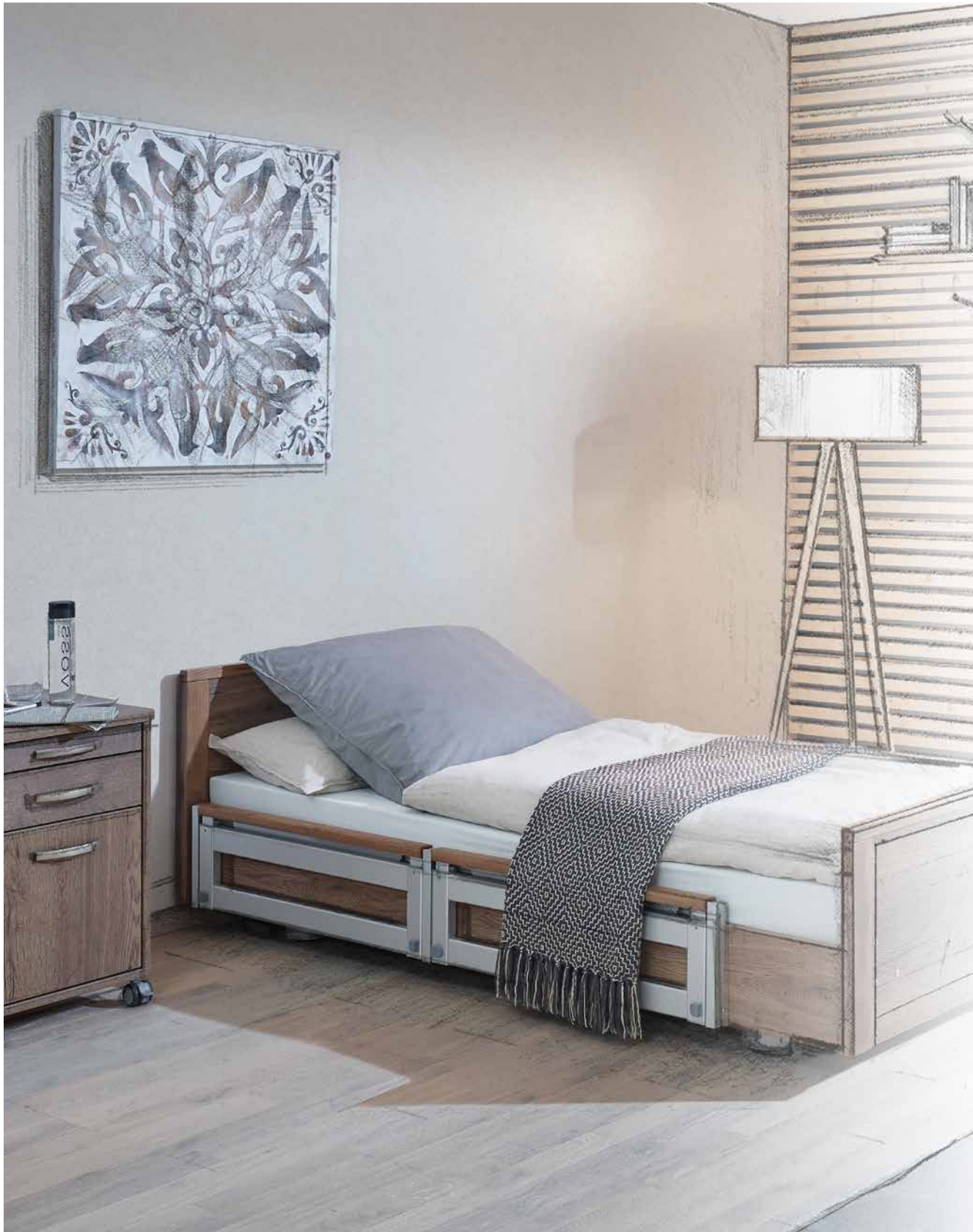


## IMPULSE care bed







” Designing a product  
is designing  
a relationship ”

*Steve Rogers*

Mobilising and protective. . . . .	6
Wide range of functions . . . . .	8
Sleeping surfaces . . . . .	10
Integrated bed extension. . . . .	11
The IMPULSE editions . . . . .	12
Designs. . . . .	15
Leather collection . . . . .	15
Fabric collection . . . . .	15
Head/foot boards . . . . .	16
Wood veneers . . . . .	17
Extract from the accessories range . . . . .	18
Features and options . . . . .	19
Specifications. . . . .	19



## QUALITY is the product of attention to detail

*Andreas Tenzer*

It is precisely this love of detail that has contributed significantly to the care bed development process. With intuitive operation, a wide range of configuration options and well-thought-out functions, the bestseller from Malsch is suitable for adapting to almost all care application areas.

IMPULSE offers flexibility and planning reliability for residential care homes or care at home.



# Mobilising and protective

## The vertically retractable side rail system



(1)

In addition to protecting patients, the safety element at the head end can be used especially as a mobilisation rail (1). Those people who need help getting in and out of bed have the support of the robust handle. The sophisticated layout of the reclining surface and side rail elements facilitates a comfortable transition to a position for getting out of bed without falling back.

In the resting position (2), the side rails are fully retracted and provide unrestricted access and convenient mobility for patients.

The extended fall prevention (3) counteracts accidental rolling out of bed through its tactile boundary of the sleeping surface. Together with its low position and a fall mat next to the bed, it presents effective fall prevention.

If the fall prevention measures are not a suitable alternative, the vertically retractable side rail system provides two different height positions for effective protection (4).

The vertically retractable side rail system in premium aluminium and a wooden handrail with four heights enables flexible use for the most varied scenarios while providing maximum stability and security.

The advantages of the telescopic variant predominantly include the compact design which does not require any lateral space, and the optional one-handed operation.



(2)



(3)



(4)

## Vertically retractable side rail system with one-handed operation

The vertically retractable side rail system is optionally available with the same functionality as a one-handed operation version.



The fold-down version of the split-side rail offers three height positions with the same material properties and stability.



## Full-length side rail

As an inexpensive alternative to the split side rails, the IMPULSE is also available with full-length side rails.



# Wide range of functions

The IMPULSE care bed provides extensive functions for maximum user comfort and safety in the care industry.

Residents at risk of falling benefit especially from the effective fall prevention, for example, on the floor bed IMPULSE edition 500. Fall consequences are significantly minimised by the exceptionally low bed height and those affected are able to have a self-determined life without the need to use measures that restrict their freedom.

In the 400, 400 LR and 500 editions, the IMPULSE care bed has an additional comfort function: the transfer position (2) extends the floor beds with an optimised intermediate height to get in and out of bed comfortable at seated height. As a stable mobilisation rail, the side rail element on the head side is universal and offers residents extra support and increased safety when getting in and out of bed.

Ergonomic, back-friendly working is an important factor to maintain the health of care staff. An upright position for daily care procedures is provided by the care and examination position (3).

Using the key function of the automatic chair position<sup>1</sup> (4), residents enjoy the benefit of a comfortable, armchair-like function in a care bed. The upright sitting position can positively impact the vital functions, make it easier to orient yourself and encourages communication at eye level.

The Trendelenburg position<sup>1</sup> (5) can help stabilise circulatory problems. The motorised adjustment in the head-lowering device enables qualified personnel to take quick action in an emergency.





(1)



(2)



(3)



(4)



(5)

- (1) Low position
- (2) Transfer position
- (3) Working height
- (4) Comfort sitting position
- (5) Trendelenburg position

# Sleeping surfaces



ABS sleeping surface

The 4-section sleeping surfaces with mattress compensation offer outstanding ergonomics and a high degree of comfort. Retracting the back rest during the adjustment process helps to relieve pressure in the buttocks area.

The ABS sleeping surface offers easy handling and quick cleaning of the removable plastic pads.

The flexible spring elements of the comfort sleeping surface adapt optimally to the body and are suitable for preventing bedsores.

As a basic variant, the metal mesh sleeping surface has excellent ventilation properties and enables optimal moisture transfer.



Comfort sleeping surface



Metal mesh sleeping surface

# Integrated bed extension

Changing residents require flexible solutions. The integrated bed extension enables optimal lying comfort, even for tall people.

The sleeping surface can be extended in a matter of seconds without tools using a quick-release mechanism. All bed functions remain fully usable in the extended state.

The system can be telescoped in two stages (by 10 or 20 cm) and does not require additional protectors. For an extension of 20 cm, we recommend using an optional mattress insert.





## The IMPULSE editions

One bed – numerous possibilities

- Wood surround Natural Halifax Oak (special décor subject to additional charge)
- V480 head/foot board
- Vertically retractable side rails with optional one-handed operation, 4 elements split on both sides, solid wood handrail





## IMPULSE Edition 400 LR

Mobile low care bed with 100 or 125 mm double castors

Edition 400 LR of the IMPULSE care bed combines mobility and comfort. This model optionally has 100 mm or especially smooth-running 125 mm twin castors with a central brake. The optionally available battery offers even greater flexibility, even when there is no socket nearby. At a low position of just 26 cm\*, this portable multi-talented bed is recommended for fall prevention.

- Wood surround Natural Halifax Oak (special décor subject to additional charge)
- V480 head/foot board
- Mobilisation rail at head end with wooden handrail



## IMPULSE Edition 400

Cosy low care bed

Axle brakes, concealed castors and an authentic material mix gives the high-quality low care bed an extra homely appeal with no indication of the technical functionality of the popular all-rounder. Lowering the sleeping surface to a height of just 25 cm\* in its low position offers effective fall prevention.

The featured vertically retractable side rail system with one-handed operation (special design subject to additional charge) is optionally available for all IMPULSE care beds.

\* measured on the upper edge of the sleeping surface



## IMPULSE Edition XL

### Bariatric bed

With a safe working load of 300kg, the IMPULSE Edition XL meets the highest requirements. The sturdy design with reinforced construction and bariatric drive set are approved for residents weighing up to 250kg. The 100mm double castors with a central brake enable secure mobility and stable positioning.

- Wood surround Natural Halifax Oak (special décor subject to additional charge)
- V480 head/foot board
- Swivel side rails, 4 elements split on both sides, aluminium handrail



## IMPULSE Edition 420

### Basic care bed

At a floor height of just 27 cm\* and an attractive design with concealed castors and axle wheel brake, the standard IMPULSE care bed model offers a cost-effective alternative to edition 400 without the pivoting sleeping surface.

- Wood surround Natural Halifax Oak (special décor subject to additional charge)
- V480 head/foot boards
- Mobilisation rail at head end with wooden handrail

\* measured on the upper edge of the sleeping surface

# Designs



malsch-individual.de

## “Style” design options

In addition to the classic wooden veneers, the various editions of the IMPULSE care bed are also available in the "Style" design option. Striking solid wood combined with cosy fabric upholstery make the functional care bed look like a trendy comfort bed. The fabric-covered side panel and filler panel are available in many colours and designs.



## Leather collection

Accurately colour-matched leather/fabric selection only with the original pattern. Subject to the use of similar alternative fabrics from other manufacturers in the event of unavailability.



Taupe

84585



Grey

84588



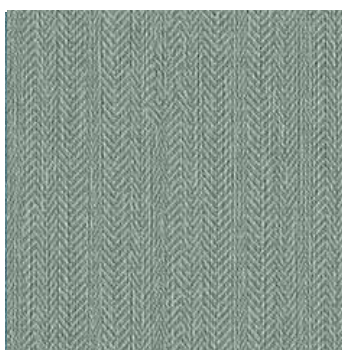
Purple

84577

## Fabric collection



SILVERTEX Icecream



VESTIGE Fern



MAGLIA Granite

The variety of leather and fabric upholstery makes it possible to design a bed that works with individual room concepts. The samples presented are just a small selection of our extensive collection.

# Head/foot boards

Choose from different designs to find a suitable head/foot board. Combined with attractive wood veneers, you'll enjoy creative freedom when designing your project.

## V408 series <sup>2</sup>



D2

D3

## V420 series <sup>2</sup>



D2

D3

Suitable for folding side rails (GS) and vertical side rails (VGS/EVGS)

## V455 series \*



D1

D2



D3

Handrail rounded



Suitable for full-length side rails (DS), folding side rails (GS) and vertical side rails (VGS/EVGS)

## V470 series \*



D1

D2



D3

Handrail rounded



Suitable for full-length side rails (DS), folding side rails (GS) and vertical side rails (VGS/EVGS)

## V480 series \*



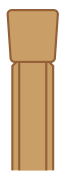
D1

D2



D3

Flat handrail



Suitable for full-length side rails (DS), folding side rails (GS) and vertical side rails (VGS/EVGS)

<sup>1</sup> subject to surcharge for GS and VGS/EVGS

<sup>2</sup> Images in Halifax oak (special finish subject to surcharge)

# Wood veneers



Maple



Beech



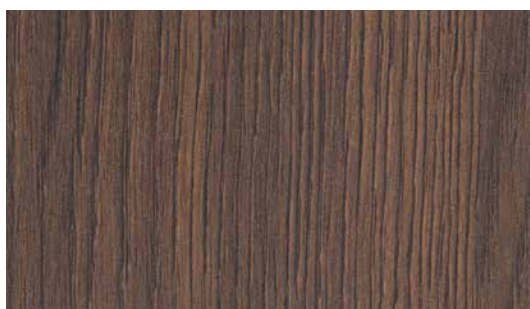
Light Oak



Sand Oak



Walnut



Dark Oak

The design selection contains reproductions. Accurately colour-matched design selection only with the original pattern. Special decors are available on request at an extra charge.

## Extract from the accessories range



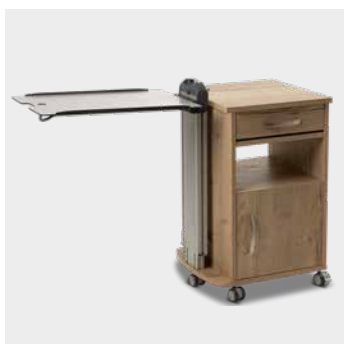
Trapeze bar



Wall deflector



CURA bed light



Bedside cabinet WIII



Bedside cabinet WIV



Server WXL



Our extensive range of accessories can be found in a separate catalogue.

The PDF file is available for download at  
<https://bettenmalsch.com/en/service/download-centre.html>

# Features and options

Edition	400	400LR	420	XL
Low position	25 cm	26 cm	27 cm	33 cm
Working height	82 cm	82 cm	80 cm	83 cm
Fall prevention	•	•	•	-
Transfer position	•	•	-	-
Comfort sitting position	•	•	-	•
Trendelenburg positioning (lockable)	•	•	-	•
CPR emergency lowering	◦	◦	-	◦
Back rest mattress compensation	•	•	◦	•
Metal mesh sleeping surface	•	•	•	•
Comfort sleeping surface	◦	◦	◦	◦
ABS sleeping surface <sup>1</sup>	◦	◦	◦	◦
Bed extension 10 cm/ 20 cm	•	•	◦	◦
Bed linen holder	◦	◦	◦	-
Double Castors	50 mm	100 mm	50 mm	100 mm
Hidden castors	•	-	•	-
Central brake	◦	•	-	•
Axis brake	•	-	•	-
EVGS side rails (with one-handed operation)	◦	◦	◦	◦
VGS side rails	◦	◦	◦	-
GS side rails (swivel)	•	•	◦	•
Full-length side rail	◦	◦	•	◦
Drive system with safety extra-low voltage	•	•	•	•
Hand controller with locking function	•	•	•	•
Under bed lighting	◦	◦	◦	◦

• Standard      ◦ optional

## Specifications

Dimensions and weight	Editions 400/400LR	Editions 420	Edition XL
Sleeping surface	90×200 cm	90×200 cm	100×200 cm
Outer dimensions	100×206 cm	100×206 cm	110×206 cm
Safe working load	max. 225 kg	max. 200 kg	max. 300 kg
Easy underneath access	15/13 cm	13 cm	13 cm
Total weight with bed extension and without accessories	approx. 110/130 kg	approx. 100 kg	approx. 150 kg

<sup>1</sup> only for standard sleeping surface size 90×200 cm

**Malsch GmbH**

Rohbergstr. 9 | D-36208 Wildeck, Germany

Tel.: +49 (0) 6626 915-100

Fax: +49 (0) 6626 915-116

Email: [info@bettenmalsch.de](mailto:info@bettenmalsch.de)

[bettenmalsch.com](http://bettenmalsch.com)

