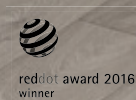


## AURA care bed





  
reddot design award  
winner 2016

  
GERMAN  
DESIGN  
AWARD  
WINNER  
2018



” Designing a product  
is designing  
a relationship”

*Steve Rogers*

Perfect functionality . . . . .	.6
Mobilising and protective. . . . .	.9
Sleeping surfaces . . . . .	.10
Integrated bed extension. . . . .	.11
The right bed for every requirement . . . . .	.12
Integrated bed linen holder . . . . .	.14
Features and options . . . . .	.15
Specifications. . . . .	.15
Head/foot boards . . . . .	.16
Extract from the accessories range . . . . .	.17
Wood veneers . . . . .	.18
Leather collection . . . . .	.19
Fabric collection . . . . .	.19





## SIMPLICITY, carried to an an extreme, becomes ELEGANCE

*Jon Franklin*

The judges on renowned design committees, such as the Red Dot and German Design Award, were impressed by the purist design of the AURA premium care bed.

The low care bed brilliantly combines design with function and safety. The elegant appearance of AURA gives no indication of its diversity.

Benefit from the enduring popularity of a prize winner and gain planning security and creative freedom for your projects.





AURA



(1)



(2)



(3)



(4)



(5)

## Functional diversity in harmony with first class design

The well-designed low care bed with its versatile functionality offers the greatest comfort and safety in care.

Fall-prone residents in particular benefit from the AURA's low position (1) as the bed height significantly reduces the risk of injury as a result of falling out of bed.

The transfer position (2) extends the low care bed to an optimal intermediate height for comfortably getting in and out of bed at seated height. As a stable mobilisation rail, the side rail bar on the head side is universal and offers extra support and increased safety when getting in and out of bed.

The care and examination position (3) increases ergonomics in care interventions and provides an upright position for care personnel that is easy on their back when carrying out daily care for those in need.

In the automatic chair position (4), residents benefit from a comfortable, upright sitting position which positively impacts their spatial orientation. For greater vitality and better communication.

The Trendelenburg position (5) can help stabilise circulatory problems. The motorised adjustment in the head-lowering device enables qualified personnel to take quick action in an emergency.













# Mobilising and protective

The advantages of the retractable vertical side rail system are its compact design, which does not require any lateral space, and the exceptional stability of the anodised aluminium precision-processed elements. A high-quality solid wood handrail with an edged design strip demonstrates the high quality of the AURA premium care bed.

” The side rails on the AURA are very discreetly attached. The combination of wood and aluminium radiates warmth and elegance.”

*Red Dot Design Award*



Innovative one-handed operation makes it possible to quickly and conveniently lower the securing elements.

## The vertically retractable side rail system

As standard, the AURA has the latest version of the vertical side rail system with convenient one-handed operation.

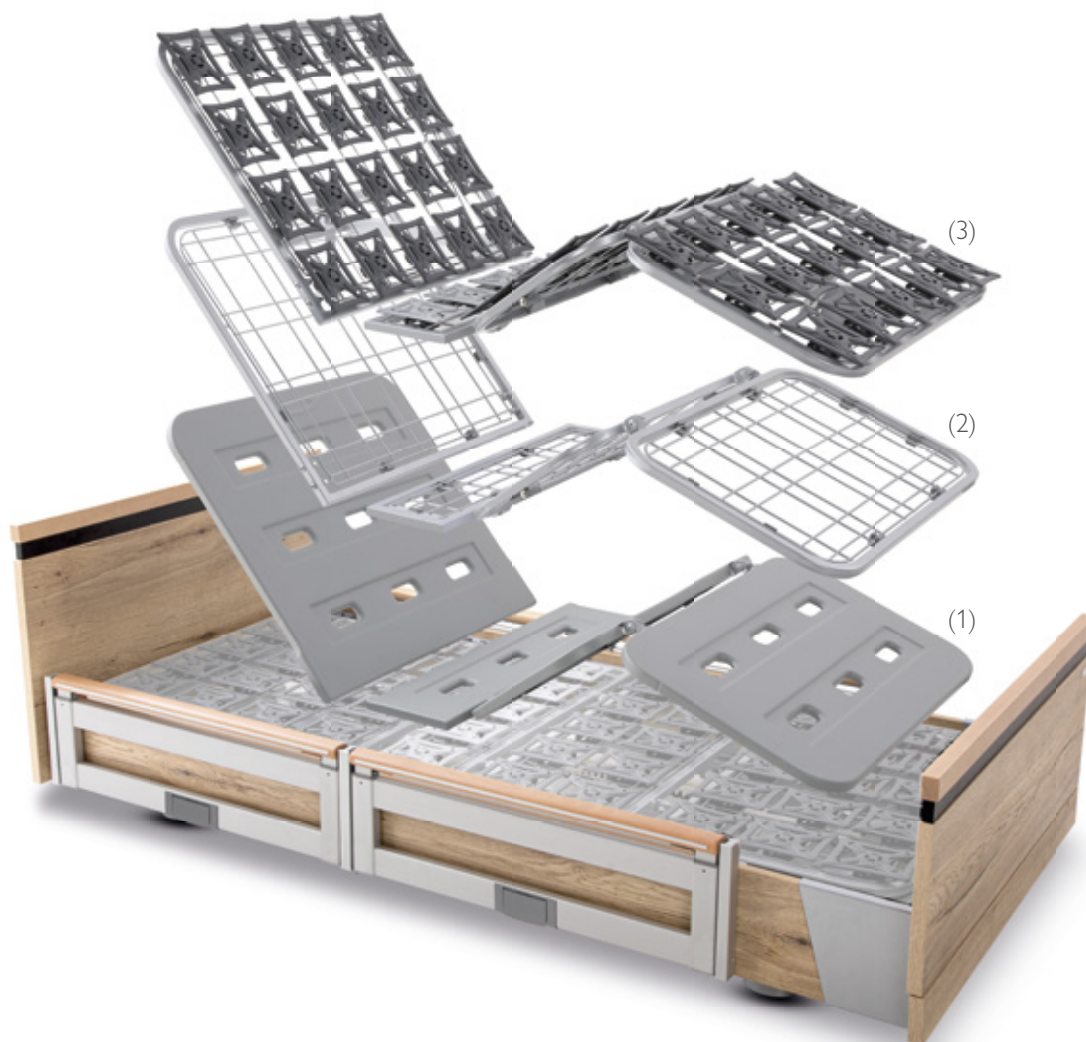
The side rail bars installed on the head end present a stable mobilisation rail (1) when raised and actively support bed occupants to get in and out of bed safely. Thanks to the optimised separation of sleeping surface and side rail system it is comfortable and safe to transfer patients without care personnel having to use mobilisation measures.

Lowered to the resting position (2), the side rails can be quickly activated when needed and ensure bed access is barrier-free at all times.

The extended fall prevention (3) position with a tactile boundary of the sleeping surface counteracts unconscious rolling out and assists care staff when repositioning patients.

If it is unavoidable for the safety of residents, the vertical side rail system has two heights for effective protection (4).

# Sleeping surfaces



The 4-section sleeping surfaces with mattress compensation offer outstanding ergonomics and a high degree of comfort. Retracting the back rest during the adjustment process helps to relieve pressure in the buttocks area.

The ABS sleeping surface offers easy handling and quick cleaning of the removable plastic pads (1).

As a basic variant, the metal mesh sleeping surface (2) has excellent ventilation properties and enables optimal moisture transfer.

The flexible spring elements of the comfort sleeping surface (3) adapt perfectly to the body and are suitable for preventing bedsores.





## Integrated bed extension

Changing residents require flexible solutions. The integrated bed extension enables optimal lying comfort, even for tall people.

The sleeping surface can be extended in a matter of seconds without tools using a quick-release mechanism. All bed functions remain fully usable in the extended state.

The system can be telescoped in two stages (by 10 or 20 cm) and does not require additional protectors. For an extension of 20 cm, we recommend using an optional mattress insert.



Figure shows the export model



# The right bed for every requirement



## AURA

The prize-winning low care bed AURA in its classic wood décor offers elegant design combined with maximum functionality. Premium aluminium side rail elements with wooden handrails and convenient one-handed operation emphasise the value of the award-winning all-rounder. The concealed castors with a central brake and modern wood surround with subtly positioned design elements give the AURA an extremely homely feel.

- Wood surround Natural Halifax Oak (special décor subject to additional charge)
- V600 head/foot boards, black inlay\*
- Integrated bed linen holder\*
- Vertically retractable side rails with optional one-handed operation, 4 elements split on both sides, wooden handrail

- Wood surround Natural Halifax Oak (special décor subject to additional charge)
- V600 head/foot boards, black inlay\*
- Mobilisation rail at head end with one-handed operation and wooden handrail

## AURA LR

The strengths of the AURALR lie in its impressive mobility. Smooth-running 100 mm twin castors and a central brake make the extremely agile.

The AURA low care bed is available in the following side rail versions:

- Without side rails
- Four side rail elements all around the bed
- Side rails on the head side as mobility aid

\* Optional equipment



## AURA “Loft”

The AURA's homely design of a high-quality upholstered bed: the elaborate leather stitching of the “Loft” design makes the AURA low care bed a real eye-catcher. This is where functionality meets extravagance. Twin castors, a central brake and vertically adjustable side rails are also available for the AURALR “Loft” model.



- Leather design Lavender anthracite diamond quilting
- V800 head/foot boards

The high-quality finished leather quilting in the “Loft” design variant is available in many colours (see Page 19).



- Leather design Slate, grey diamond quilting
- V850 head/foot boards
- Mobilisation rail at head end with one-handed operation and wooden handrail

The thinner upholstery of the V850 head/foot boards gives the AURA “Loft” a more delicate appearance. Bed occupants are comfortably supported and enjoy greater safety when getting in and out of bed with the telescopic mobilisation rail.



## Integrated bed linen holder

Practical, hygienic and easy to use: the optional bed linen holder facilitates the work of care staff and prevents the bed sheets from coming into contact with the floor.





# Features and options

	AURA	AURA LR
Low position	25 cm	26 cm
Working height	82 cm	82 cm
Fall prevention	•	•
Transfer position	•	•
Comfort sitting position	•	•
Trendelenburg positioning (lockable)	•	•
CPR emergency lowering	◦	◦
Back rest mattress compensation	•	•
Metal mesh sleeping surface	•	•
Comfort sleeping surface	◦	◦
ABS sleeping surface <sup>1</sup>	◦	◦
Bed extension 10 cm/20 cm	•	•
Bed linen holder	◦	◦
Double castors	50 mm	100 mm
Hidden castors	•	-
Central brake	•	•
EVGS side rails (with one-handed operation)	•	•
Drive system with safety extra-low voltage	•	•
Hand controller with locking function	•	•
Under bed lighting	◦	◦

• Standard    ◦ optional

# Specifications

Dimensions and weight	AURA/AURA LR	AURA "Loft"
Sleeping surface	90×200 cm	90×200 cm
Outer dimensions	102,5×206 cm	107×218 cm
Safe working load	max. 225 kg	max. 225 kg
Easy underneath access	13/15 cm	13 cm
Total weight	approx. 140 kg	approx. 140 kg

<sup>1</sup> only for standard sleeping surface size 90×200 cm

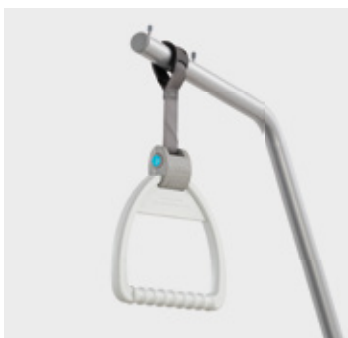
# Head/foot boards

The characteristic AURA head/foot board with contrasting colour inlay and decorative trim at the foot end comes in open or closed versions.





# Extract from the accessories range



Trapeze bar



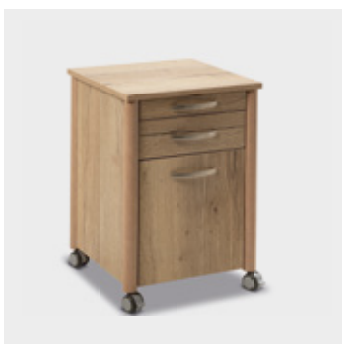
Wall deflector



CURA bed light



Bedside cabinet WIII



Bedside cabinet WIV



Server WXL

Our extensive range of accessories can be found in a separate catalogue.

The PDF file is available for download at <https://bettenmalsch.com/en/service/download-centre.html>



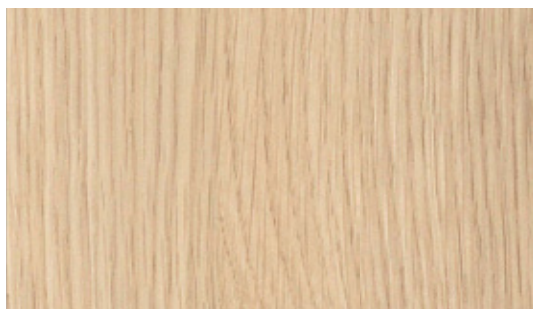
# Wood veneers



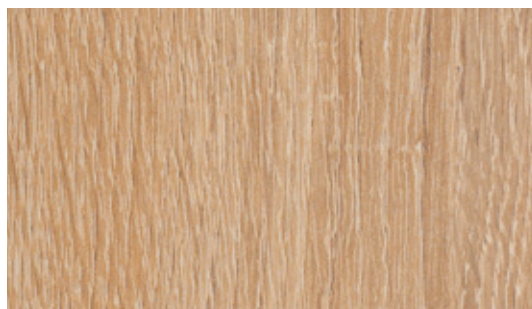
Maple



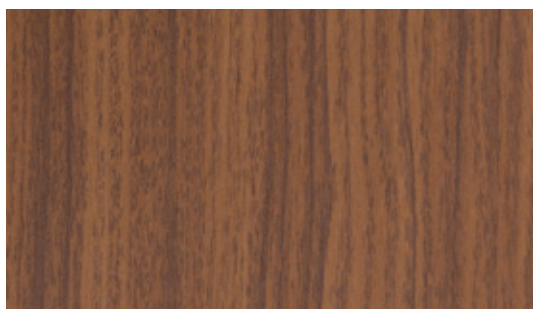
Beech



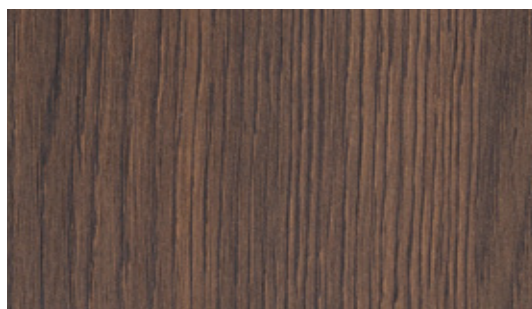
Light Oak



Sand Oak



Walnut



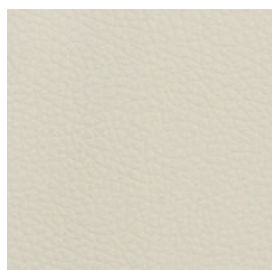
Dark Oak

The design selection contains reproductions. Accurately colour-matched design selection only with the original pattern. Special decors are available on request at an extra charge.

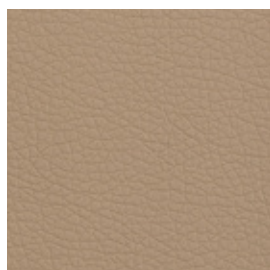


# Leather collection

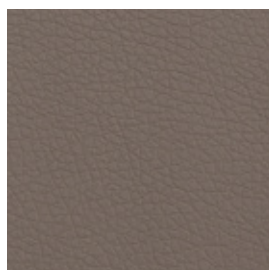
Accurately colour-matched leather/fabric selection only with the original pattern. Subject to the use of similar alternative fabrics from other manufacturers in the event of unavailability.



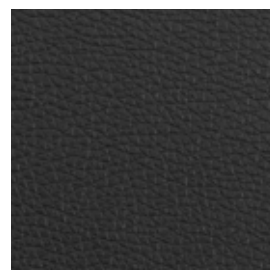
Beige Butterfly 84561



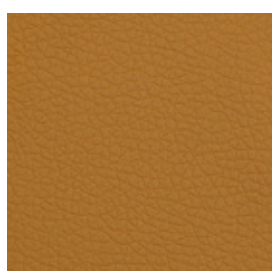
Beige 84563



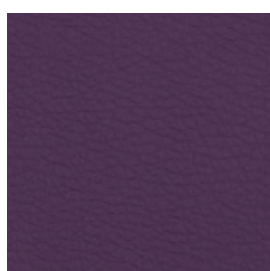
Taupe 84585



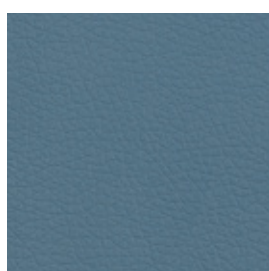
Grey 84588



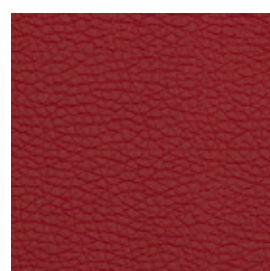
Mostaza 84570



Purple 84577

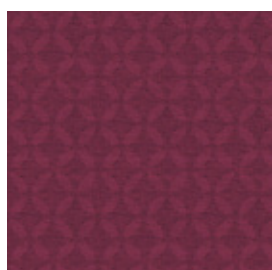


Sky 84579

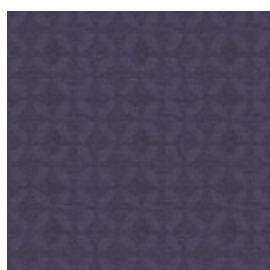


Red 84568

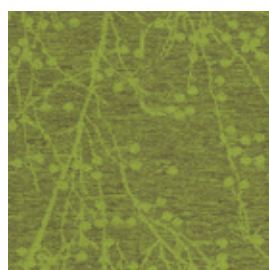
# Fabric collection



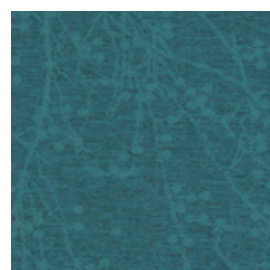
ASPEN Petal



ASPEN Lavender



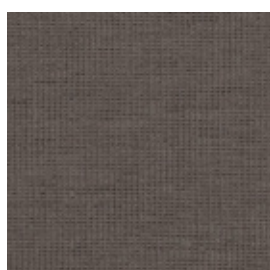
BLOSSOM Gooseberry



BLOSSOM Lake



CEDAR Almond



CEDAR Nutmeg



TIBA X 7110



TIBA X 1111

The variety of wooden designs or leather and fabric upholstery makes it possible to create a bed to complement individual room concepts. The samples shown are just a selection of our extensive collection.

**Malsch GmbH**

Rohbergstr. 9 | D-36208 Wildeck

Tel.: +49 (0) 6626 915-100

Fax: +49 (0) 6626 915-116

E-Mail: [info@bettenmalsch.de](mailto:info@bettenmalsch.de)

[bettenmalsch.com](http://bettenmalsch.com)

